

# Retrofit Case Study

Cambridge Space Heaters vs.  
Indirect Fired Air Turnover

## Furniture Warehouse



### Building Specifications

- 105,948 ft<sup>2</sup>
- Located in Perrysburg, OH
- 1 @ 3125 MBH / 100,000 CFM  
(2) 10 HP Motors
- 1 @ 2175 MBH / 60,000 CFM / 2-  
5 HP Motors

### Before – Indirect Fired Air Turnover Performance

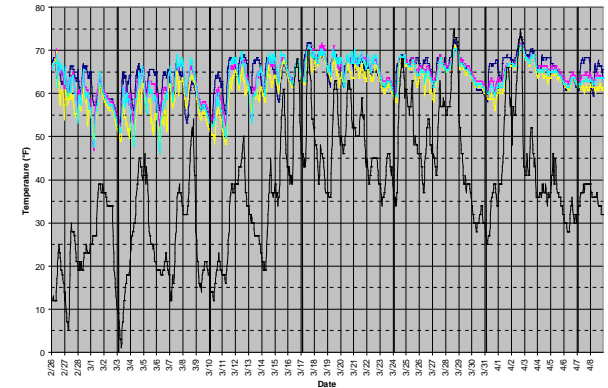


#### Operating Costs

\$0.54/ft<sup>2</sup> Gas cost @ \$1.00/therm  
\$0.12/ft<sup>2</sup> Electric cost @ \$0.08/kWh

**\$0.66/ft<sup>2</sup> Total cost**

### Performance



### After - Cambridge Space Heaters

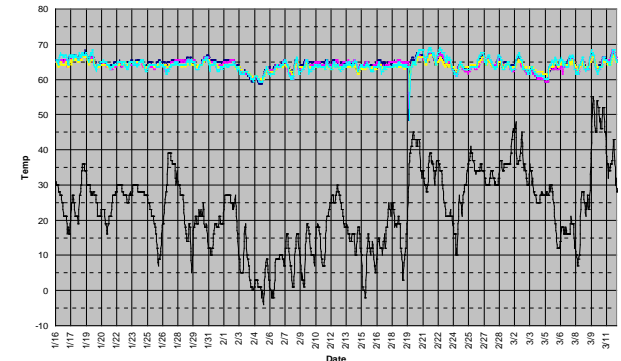


#### Operating Costs

\$0.33/ft<sup>2</sup> Gas cost @ \$1.00/therm  
\$0.03/ft<sup>2</sup> Electric cost @ \$0.08/kWh

**\$0.36/ft<sup>2</sup> Total cost**

### Performance



### Summary

After building size increased by 100% and installed Cambridge, the fuel cost **increased only 9%**. Note: New Addition has Cambridge, Old section has Cambridge and one Air Rotation. 80% of building is now Cambridge. They replaced one Air Rotation



760 Long Road Crossing Dr. • Chesterfield MO 63005  
800-899-1989 • www.cambridge-eng.com