

Comparative Case Study

Cambridge HTHV vs. Draw Thru Make-up Air

Detroit Warehouses

Cambridge HTHV Space Heaters



Operating Costs

Based on 6,440 Heating Degree Days @ 65°

\$0.28/ft² Gas cost @ \$1.00/therm

\$0.01/ft² Electric cost @ \$0.08/kWh

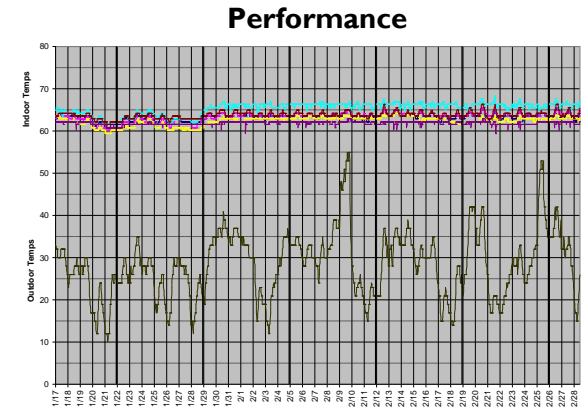
\$0.29/ft² Total cost

Building Specifications

- 225,000 ft² x 34' high
- R-12 Roof / R-8 Walls

Heating System

- (3) Cambridge HTHV Space Heaters
- Roof top mounting
- 4,600 MBH total
- 21,815 CFM total
- 13.5 HP total – intermittent



±6° indoor temperature variation
from 65° setpoint

Draw Thru Make-up Air Heaters



Operating Costs

Based on 6,440 Heating Degree Days @ 65°

\$0.59/ft² Gas cost @ \$1.00/therm

\$0.03/ft² Electric cost @ \$0.08/kWh

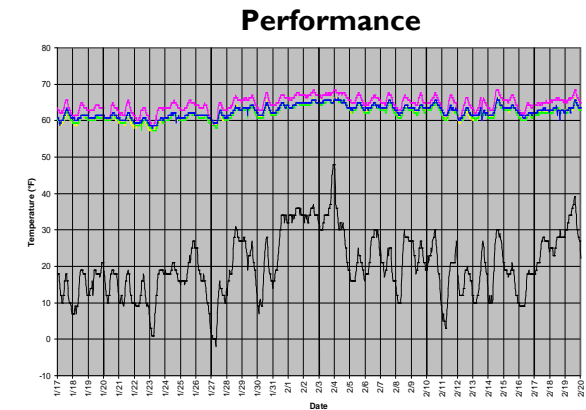
\$0.62/ft² Total cost

Building Specifications

- 200,000 ft² x 34' high
- R-12 Roof / R-8 Walls

Heating Systems

- (4) Draw Thru Make-up Air Heaters
- Roof top mounting
- 6,400 MBH total
- 41,976 CFM total
- 30 HP total – intermittent



12° indoor temperature variation
(setpoint unknown)

Summary

The Cambridge HTHV system used over **53% less** total energy.

If the 200,000 ft² facility had installed a Cambridge HTHV system they could have saved approximately **\$63,000/year** operating at \$0.29/ft² vs. \$0.62/ft².