

Comparative Case Study

Cambridge Space Heaters vs. Draw Thru Make-up Air Heaters

Paper & Packaging Supplies Distributor

Cambridge Space Heaters



Operating Costs

Based on 6,256 Heating Degree Days @ 65°

\$0.15/ft² Gas cost @ \$1.00/therm

\$0.01/ft² Electric cost @ \$0.08/kWh

\$0.16/ft² Total cost

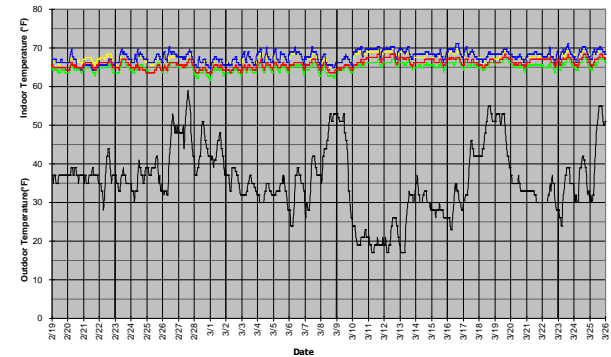
Building Specifications

- 100,800 ft² x 28' high
- R-19 Roof / R-14 Walls
- Located in Cleveland, OH

Heating System

- (2) Cambridge Space Heaters
- Thru wall mounting
- 1,800 MBH total
- 11,850 CFM total
- 6 HP total - intermittent

Performance



10° indoor temperature variation

Draw Thru Make-up Air Heaters



Operating Costs

Based on 4,932 Heating Degree Days @ 65°

\$0.32/ft² Gas cost @ \$1.00/therm

\$0.07/ft² Electric cost @ \$0.08/kWh

\$0.39/ft² Total cost

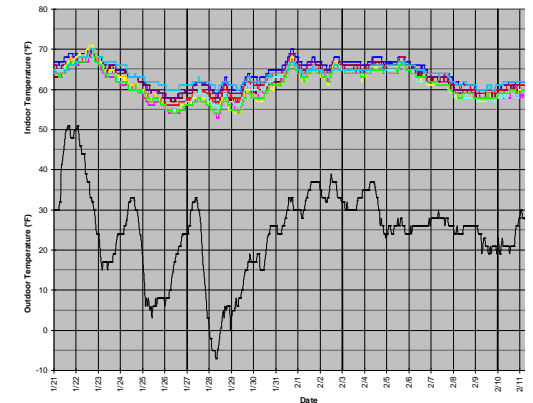
Building Specifications

- 158,200 ft² x 27' high
- R-19 Roof / R-16 Walls
- Located in St. Louis, MO

Heating Systems

- (8) Draw Thru Make-up Air Heaters
- Roof top mounting
- 5,566 MBH total
- 44,000 CFM total
- 30 HP - continuous

Performance



19° indoor temperature variation

Summary

The Cambridge system used over **59% less** total energy in a climate with 27% more heating degree days. If the 158,200 ft² facility had installed a Cambridge system they could have saved approximately **\$36,000/year** operating at \$0.16/ft² vs. \$0.39/ft².



760 Long Road Crossing Dr. • Chesterfield MO 63005
800-899-1989 • www.cambridge-eng.com