

Comparative Case Study

Cambridge Space Heaters vs. Infrared

Midwest Distribution Centers

Cambridge Space Heaters



Operating Costs

Based on 6,485 Heating Degree Days at 65°

\$0.18/ft² Gas cost @ \$1.00/therm

\$0.03/ft² Electric cost @ \$0.08/kWh

\$0.21/ft² Total cost

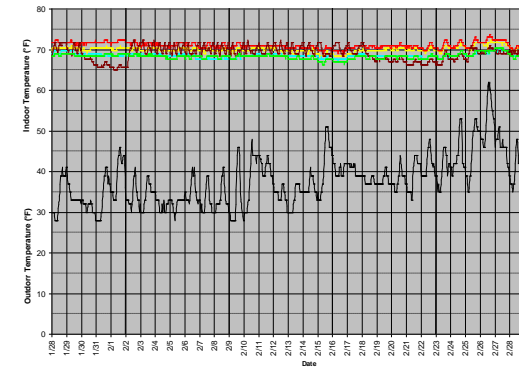
Building Specifications

- 280,000 ft² x 33' high
- R-14 Roof / R-8 Walls
- Located in Chicago, IL

Heating System

- (4) Cambridge Space Heaters
- Roof top mounting
- 7,600 MBH total
- 50,000 CFM total
- 40 HP total - intermittent

Performance



±5° indoor temperature variation from setpoint

Infrared Heaters



Operating Costs

Based on 6,440 Heating Degree Days at 65°

\$0.38/ft² Gas cost @ \$1.00/therm

\$0.01/ft² Electric cost @ \$0.08/kWh

\$0.39/ft² Total cost

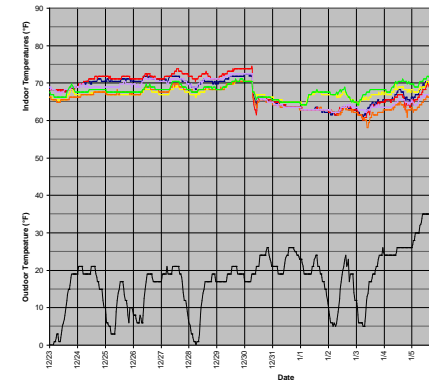
Building Specifications

- 451,000 ft² x 35' high
- R-15 Roof / R-10 Walls
- Located in Detroit, MI

Heating Systems

- (48) Infrared Tube Heaters
- Suspended mounting @ 28'
- 9,600 MBH total
- No outside air
- 12 HP total - intermittent

Performance



±9° indoor temperature variation from setpoint

Summary

The Cambridge system used over **46% less** total energy.

If the 451,000 ft² facility had installed a Cambridge system they could have saved approximately **\$81,000/year** operating at \$0.21/ft² vs. \$0.39/ft².



760 Long Road Crossing Dr. • Chesterfield MO 63005
800-899-1989 • www.cambridge-eng.com