

Comparative Case Study

Cambridge Space Heaters vs. Air Turnover 2 Side by Side Tenants – Central PA

Cambridge Space Heaters



Operating Costs

Based on 5,441 Heating Degree Days

\$0.19/ft² Gas cost @ \$1.00/therm

\$0.02/ft² Electric cost @ \$0.08/Kwh

\$0.21/ft² Total cost

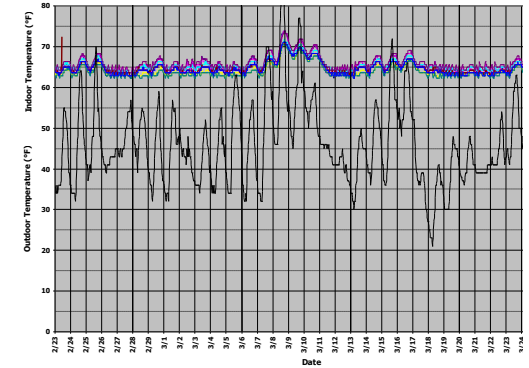
Building Specifications

- 62,000 ft² x 34' high
- R-19 Roof / R-3 Walls

Heating System

- (2) Cambridge Space Heaters
- Roof top mounting
- 1,800 MBH total
- 11,400 CFM total
- 6 HP total – intermittent

Performance



± 4° indoor temperature variation
from 65° setpoint

Air Turnover



Operating Costs

Based on 5,441 Heating Degree Days

\$0.33/ft² Gas cost @ \$1.00/therm

\$0.05/ft² Electric cost @ \$0.08/Kwh

\$0.38/ft² Total cost

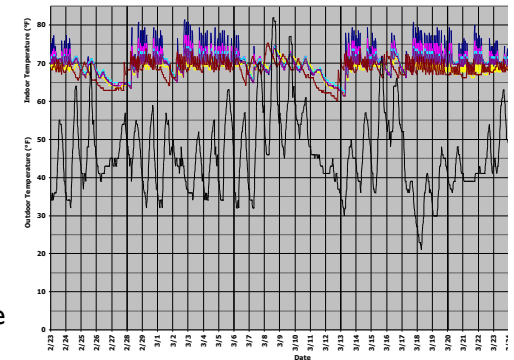
Building Specifications

- 24,000 ft² x 34' high
- R-19 Roof / R-3 Walls

Heating Systems

- (1) Air Turnover Heater
- Floor mounting
- 1,250 MBH total
- Unknown CFM
- 6 HP total – intermittent (turned off due to noise)

Performance



± 12° indoor temperature variation
from 70° setpoint

Summary

The Cambridge system used over **45% less** total energy.
If the 24,000 ft² facility had installed a Cambridge system they could have saved approximately **\$4,000/year** operating operating at \$0.21/ft² vs. \$0.38/ft².



760 Long Road Crossing Dr. • Chesterfield MO 63005
800-899-1989 • www.cambridge-eng.com