

Cambridge Case Study

Food Distributor

Newark, NJ



BUILDING DETAILS

Size: 620,292 sq.ft. x 30.5 ft. High
Construction: R-12.5 Roof
R-16 & R-25 Walls

OPERATING CONDITIONS

Operating Hours: 24 hrs/day 5 days/wk
Design Temperature: 65° @ 0°
Average Temperature: 65°
Heating System: Cambridge Space Heaters
5 @ 1200 MBH
3 @ 1900 MBH
2 @ 900 MBH
Under roof mounting

ACTUAL FUEL USE

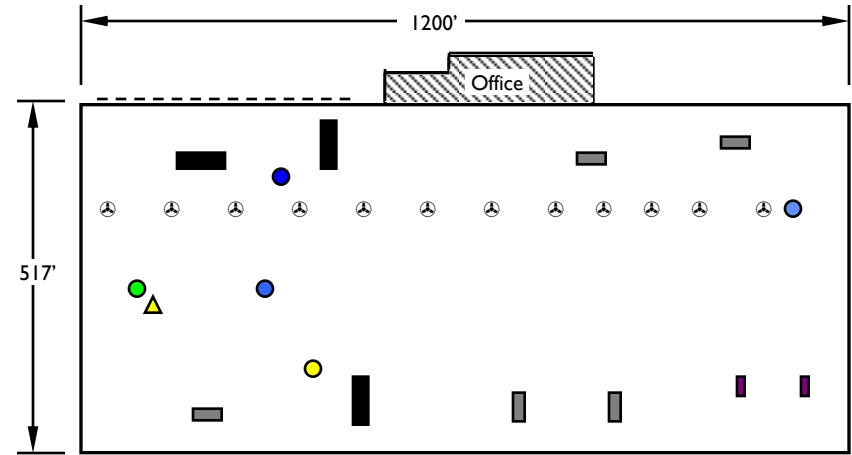
for the 1996-97 heating season (4,902 Heating Degree Days @ 65°)

2.7 Btu / HDD / sq. ft.

CALCULATED OPERATING COST

for normal heating season (5,227 Heating Degree Days @ 65°)

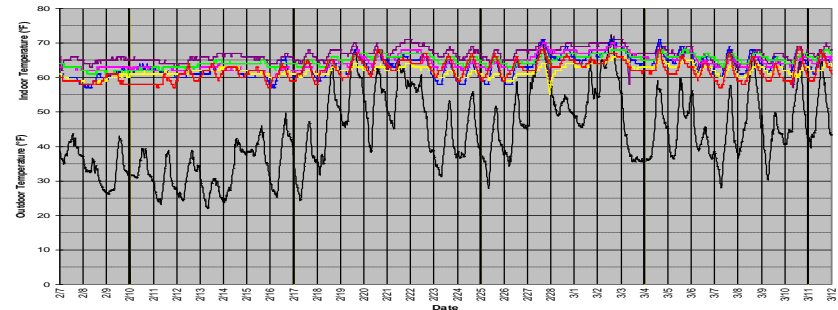
\$0.07 / sq.ft. (Gas only @ \$0.50/therm)



- Temperature Logger @ 3' AFF
- ▲ Temperature Logger @ 28' AFF
- ⊙ Ceiling Fan
- 1900 MBH Heater
- 1200 MBH Heater
- 900 MBH Heater

DATALOGGER GRAPH

Logging period: 2/8/96 - 3/6/97
Logging interval: 15 minutes



760 Long Road Crossing Dr. • Chesterfield MO 63005
800-899-1989 • www.cambridge-eng.com