

Cambridge Case Study

Automotive Parts Distribution Center

Shenandoah Valley, VA



BUILDING DETAILS

Size: 346,800 sq.ft. x 32 ft. High

Construction: R-15 Roof
R-8 Walls

OPERATING CONDITIONS

Operating Hours: 24 hrs/day 7 days/wk

Design Temperature: 65° @ 10°

Thermostat Settings: 65° occupied / 55° setback

Average Temperature: 65°

Heating System: Cambridge Space Heaters
2 @ 1550 MBH
4 @ 1000 MBH
Thru wall mounting

ACTUAL FUEL USE

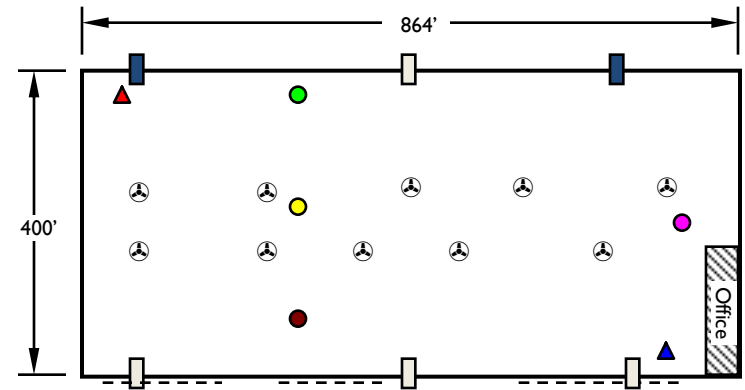
for the 1996-97 heating season (5,180 Heating Degree Days @ 65°)

1.8 Btu / HDD / sq. ft.

CALCULATED OPERATING COSTS

for 30 year (1971-2000) average heating seasons

Indoor Temp	HDDs	@ \$0.50 / therm	@ \$0.75 / therm	@ \$1.00 / therm
50°	2,033	\$0.02 / ft ²	\$0.03 / ft ²	\$0.04 / ft ²
55°	2,880	\$0.03 / ft ²	\$0.04 / ft ²	\$0.05 / ft ²
60°	3,884	\$0.04 / ft ²	\$0.05 / ft ²	\$0.07 / ft ²
65°	5,046	\$0.05 / ft ²	\$0.07 / ft ²	\$0.09 / ft ²

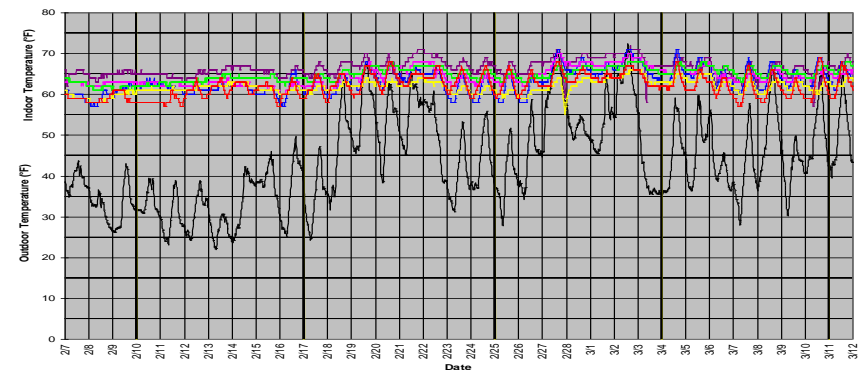


- Temperature Logger @ 4' AFF
- ▲ Temperature Logger @ 29' AFF
- 1000 MBH Heater
- 1550 MBH Heater
- ⊙ Ceiling fan

DATALOGGER GRAPH

Logging period: 2/7/97 - 3/12/97

Logging interval: 30 minutes



760 Long Road Crossing Dr. • Chesterfield MO 63005
800-899-1989 • www.cambridge-eng.com