

Cambridge Case Study

Distribution Center

Ottawa, ON



BUILDING DETAILS

Size: 77,616 sq. ft. x 30' ft. high

Construction: R-20 Roof
R-15 Walls

OPERATING CONDITIONS

Operating Hours: 10 hrs/day 5 days/wk

Design Temperature: 60° @ -17°

Thermostat Settings: 65° occupied / 60° setback

Average Temperature: 65°

Heating System: Cambridge Space Heaters
2 @ 900 MBH
Under Roof mounting

NOTES & OBSERVATIONS

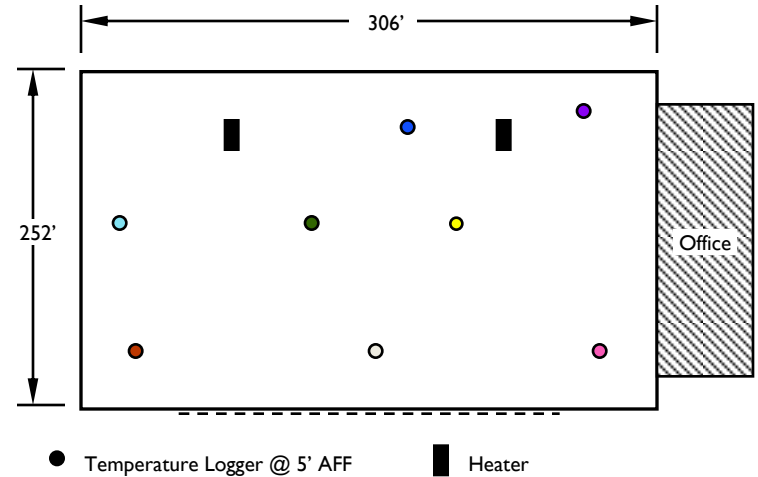
- Thermostats changed to 65° on 1/20

CALCULATED OPERATING COSTS *

for 30 year (1971-2000) average heating seasons

Indoor Temp	HDDs	@ \$0.75 / therm	@ \$1.00 / therm	@ \$1.25 / therm
50°	4,589	\$0.10 / ft ²	\$0.10 / ft ²	\$0.13 / ft ²
55°	5,660	\$0.12 / ft ²	\$0.16 / ft ²	\$0.20 / ft ²
60°	6,887	\$0.15 / ft ²	\$0.20 / ft ²	\$0.24 / ft ²
65°	8,270	\$0.18 / ft ²	\$0.23 / ft ²	\$0.29 / ft ²

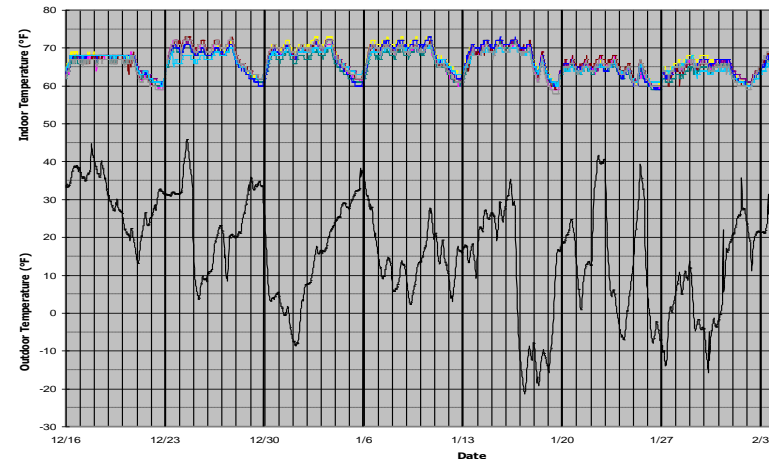
* based on actual 1996-97 consumption of 14,345 therms for 7,748 Heating Degree Days



DATALOGGER GRAPH

Logging period: 12/16/96 - 2/11/97

Logging interval: 30 minutes



760 Long Road Crossing Dr. • Chesterfield MO 63005
800-899-1989 • www.cambridge-eng.com