

Cambridge Case Study

Distribution Center

Milwaukee, WI



BUILDING DETAILS

Size: 215,040 sq.ft. x 30 ft. High
Construction: R-19 Roof
 R-11 Walls

OPERATING CONDITIONS

Operating Hours: 16 hrs/day 5 days/wk
Design Temperature: 55° @ -10°
Average Temperature: 63°
Heating System: Cambridge Space Heaters
 3 @ 1205 MBH
 Thru wall mounting

NOTES & OBSERVATIONS

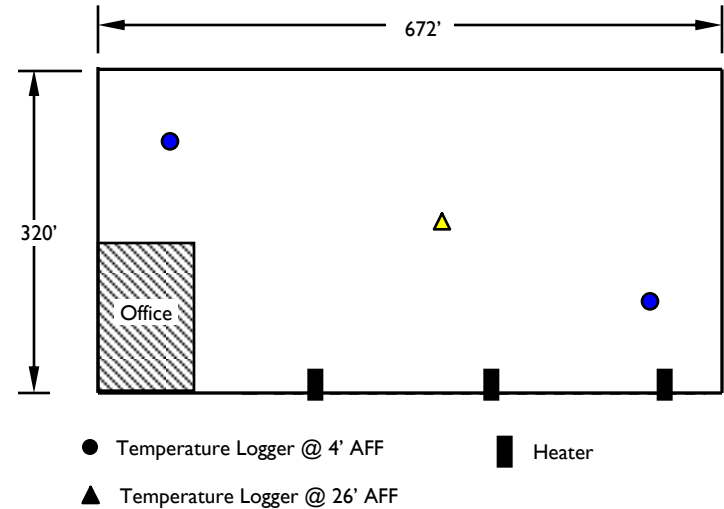
- Thermostat settings changed from 60° to 63° on 1/27

CALCULATED OPERATING COSTS *

for 30 year (1971-2000) average heating seasons

Indoor Temp	HDDs	@ \$0.75 / therm	@ \$1.00 / therm	@ \$1.25 / therm
50°	3,564	\$0.04 / ft ²	\$0.04 / ft ²	\$0.06 / ft ²
55°	4,598	\$0.05 / ft ²	\$0.07 / ft ²	\$0.09 / ft ²
60°	5,769	\$0.07 / ft ²	\$0.09 / ft ²	\$0.11 / ft ²
65°	7,086	\$0.08 / ft ²	\$0.11 / ft ²	\$0.14 / ft ²

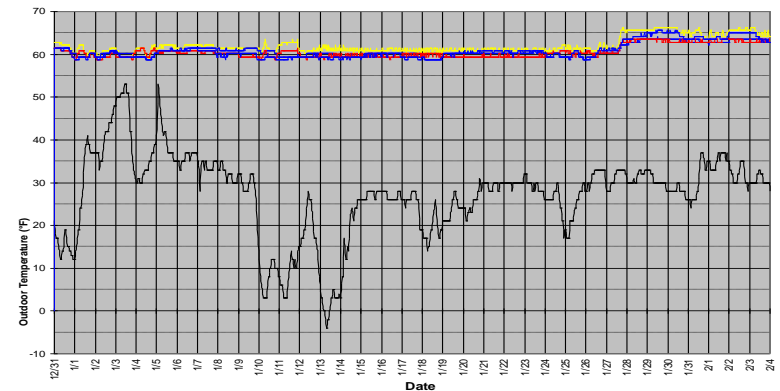
* based on actual 1997-98 consumption of 17,142 therms for 5,422 Heating Degree Days



DATALOGGER GRAPH

Logging period: 12/31/97 - 2/4/98

Logging interval: 30 minutes



760 Long Road Crossing Dr. • Chesterfield MO 63005
 800-899-1989 • www.cambridge-eng.com